

COMMON APPROACHES IN THE PIPELINE

BUILDING BRAINS

EARLY LEARNING AND CARE FOR CHILDREN FROM BIRTH TO AGE THREE

THE PROBLEM

The evidence is unequivocal - what happens in the earliest years of a child's life has a huge impact, with 90% of brain development taking place before a child's fifth birthday. Children who do not receive adequate health, nutrition, protection, care, and stimulation in their early years are more likely to do poorly in school and earn less, entrenching a lifetime of unfairness and poverty. Interventions that support caregivers of young children have been shown to improve responsiveness, attachment and bonding and early brain development. Yet there is a gap on how to programme for children from birth to three years, particularly to support their cognitive development through early learning and responsive care.

Building Brains is a Common Approach in the pipeline and has not yet been endorsed.

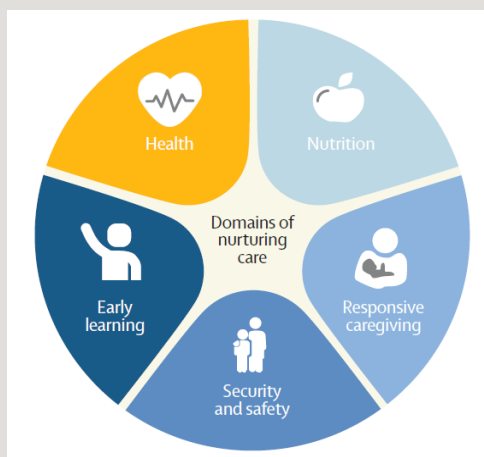
The Building Brains Common Approach is based on an adaption of the current Building Brains toolkit. The Building Brains task team is aiming to submit a Common Approach proposal for endorsement in Q4 2018.

For more information please contact Romilla Karnati rkarnati@savechildren.org or join the [Building Brains group on Workplace](#).



OUR APPROACH

The Building Brains Common Approach supports early learning and responsive care for children from birth to age three, with an emphasis on reaching every child using different sector platforms. It includes guiding principles and technical guidance to implement programs to support children's early development. The aim is to *reach every child through any platform*.



Integrated Programming for Young Children

A child's early development is the result of interaction between the child and stimulating and responsive environments that provide early learning opportunities, protection and fulfil health and nutritional needs. Nurturing care consists of five inter-related components: health, nutrition, safety, and security, early learning, and responsive care. Children need all five domains of nurturing care to meet their developmental potential.

We should therefore seek to support the implementation of multi-sector services to support children's holistic development. In support of this, the Building Brains Common Approach provides specific guidance to support the 'Early Learning' and 'Responsive Care' domains.

Key Activities for Building Brains

1. Conduct a **situation analysis** to gather information on the situation for the youngest children
2. Plan to **influence policies and systems** in support of early learning for children from birth to age three
3. Design **monitoring, evaluation accountability and learning** plans to build evidence and track progress.
4. Select **entry points** to reach the youngest children and their caregivers via different service delivery platforms such as health clinics, nurseries or feeding programs.
5. Identify the **delivery modality** for the interventions, including the type (such as home visits, group parenting sessions, counselling sessions) and intensity (the duration and frequency of the interaction between early childhood worker and caregiver).
6. Develop **content based on three core messages** for caregivers:
 - *Early Communication*: Talk, sing and read with your child every day from birth.
 - *Learning through Play*: Play and repeat simple games with your child every day and let the child play with different safe things around the house.
 - *Responsive Care*: Hold and touch your child often and respond to signals and cues.
7. Build **capacity of the early childhood workforce** (including health workers, social workers, or nursery teachers) to interact with caregivers in support of early learning and responsive care.