

CONNECT

COMMUNITY-LEVEL
INTEGRATED CASE
MANAGEMENT MODEL

Linking child protection,
social protection systems,
CVA, nutrition and education



Save the Children

Following a once-in-a-generation crisis in education caused by the global pandemic, thousands of children are at risk. Save the Children's CONNECT approach is designed to address the needs of children, so they are able to get back to the safety of school.

Using a proven model, which is systematic and scalable, our **CONNECT** model provides *individually-targeted* care through direct support and referrals to other services, such as cash assistance and social protection. Donations of **\$200,000 USD** will enable us to provide children with improved, integrated services in multiple communities, safeguarding the lives of vulnerable children and restoring the basic education, health and protection needs so cruelly disrupted by the pandemic.

The Problem

The rapid spread of the coronavirus (COVID-19) in 2020 forced the world's schools to shut their doors to 1.6 billion children,¹ disrupting the education of an entire generation. With global poverty levels also increasing for the first time in 25 years, millions of households are now experiencing food insecurity, increased debt and the depletion of assets.² A 2020 survey of over 8,000 children, showed that domestic violence increased the longer schools were closed, and that child marriage was on the rise, placing children at risk of harm and unparalleled stress. **Girls, children with disabilities, children living in poverty and children who have been displaced face the greatest risks.**

When a child is either out of school or struggling to attend school regularly, it is **not only their education that suffers**. Lack of regular access to school meals and safe drinking water, combined with increased anxiety and stress, can cause long-term harm to a child's physical and mental health and wellbeing. The risk of violence and abuse at home or being forced into child labour, as well as recruitment into gangs and militias, also increases.

Other serious issues exacerbated by the pandemic include poverty, having to flee homes, risk of family separation, inadequate income, lack of access to the internet or other methods of learning, as well as health and nutritional concerns. Girls can face specific challenges around their physical safety, responsibilities within the home, issues related to menstruation, pregnancy, and early marriage.

Schools provide an opportunity for children to be visible outside their homes. Traditionally, teachers are often the first to identify children who are at risk, either due to their behaviour in the classroom or through their absence in school. With school closures, many communities are now experiencing a break in this critical support network. The teacher's role as an essential partner in identifying a child's *specific* needs has been lost. The most vulnerable children are at **risk of falling under the radar**.

¹ UNESCO (2020), [COVID-19 Educational Disruption and Response](#)

² Ninety percent of households lost over half their income during the pandemic, struggling to access healthcare and medicine. Violence against children in the household was reported at over double the rate than when schools were open. Save the Children (2020), [Protect a Generation: The impact of COVID-19 on children's lives](#)

Our solution

Using a best-practice approach, proven over many years, across many contexts, Save the Children will provide vulnerable children and their caregivers with carefully targeted care and support, tailored to their specific needs. **Each child's case is individually managed** to holistically reduce risks. Our **CONNECT** model is fully scalable and can be deployed across a wide range of countries.

Our unique approach

1 Identifying vulnerable children

Working directly with schools and local partners, our case management approach first identifies vulnerable children who have:

- not returned to school
- been assessed as being at high risk of dropping out
- returned to school, but subsequently dropped out.

2 Providing individual case management

Our case management follows the model developed by doctors, who realised that patients needed support with legal, education, housing and health services in order make a full recovery. In the same way, our case management support looks at **each child individually** and takes a wider view of the challenges they face.

Skilled case workers **assess the child's needs**, joining them up with service providers who can help them to reduce risks of harm, abuse and neglect, and overcome personal obstacles they face in getting back to school. At the same time, **cash assistance** can be used to reduce the strain on impoverished parents and caregivers. This can stop children being introduced to child labour or early marriage and provide them with better food and health care at home.

3 Providing ongoing support

Case workers on the ground regularly follow-up to provide the child and their caregivers with emotional support and practical guidance, as well as refer them to cash assistance or social protection schemes, if it is needed. Each child is given as much or as little time as they need to re-enter school. Once re-enrolled, they'll continue to receive the support they need to stay.



Save the Children

Strengthening support on the ground

The pandemic has restricted the ability of social care professionals to travel between communities, reduced the time teachers have to support children outside of the classroom, and put pressure on household incomes.

Our **CONNECT** model includes **strengthening local community case management capacity**. To do this, we will train community teachers and other local professionals to identify the signs and symptoms of children with vulnerabilities – and how to refer children safely. This will enable us to reach **more** children through people they know and trust, ideally **before** they drop out of school.

Scalability through community participation and partnership

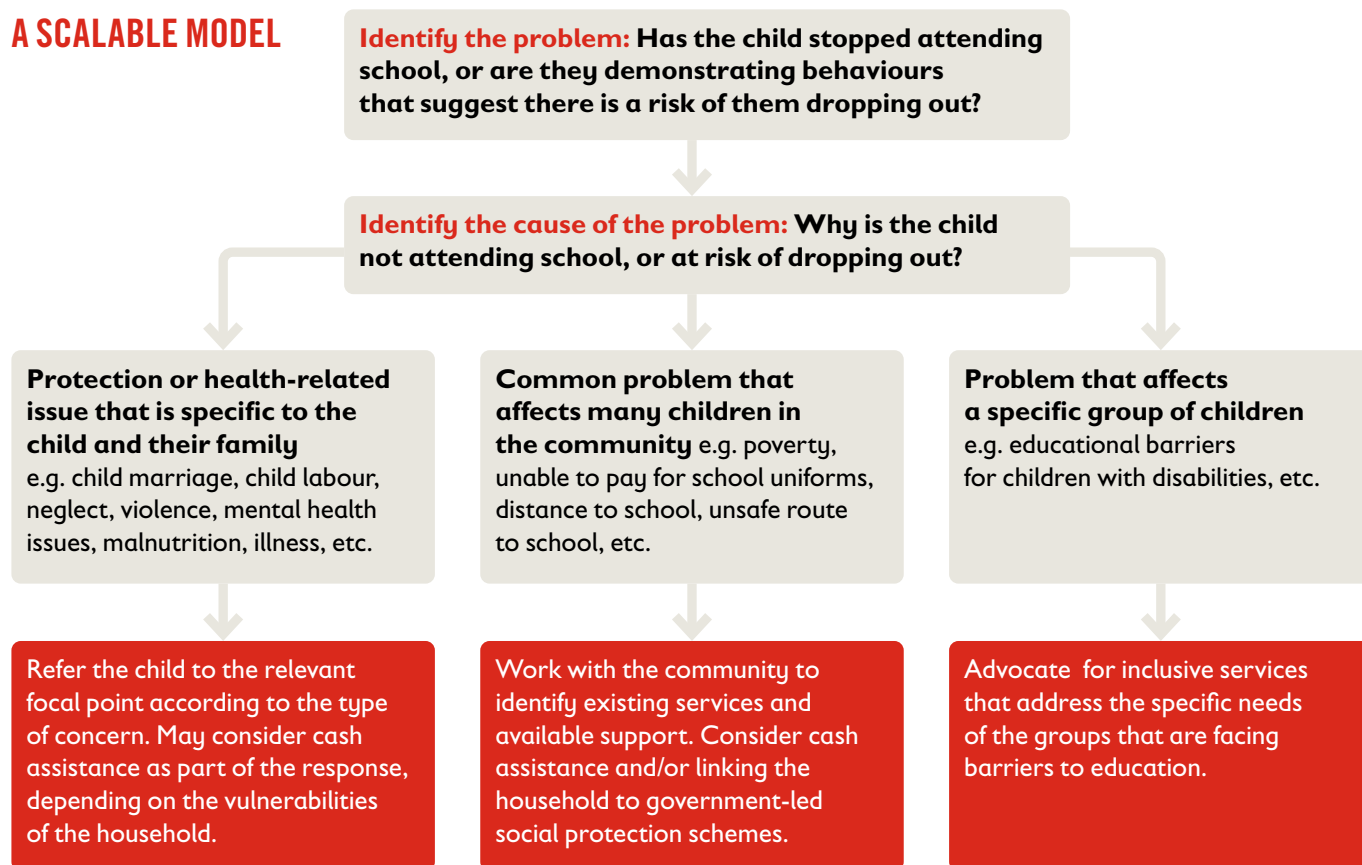
By delivering case management through a *community* lens, we will deliver a **streamlined** case management service. **Through one investment**, we can:

- meet a **child's holistic needs**
- support communities to drive **solution-building and advocacy**
- effectively **scale and rollout** across multiple communities and through other agencies, governments and existing social care and protection schemes, where available.



Save the Children

A SCALABLE MODEL



WHAT YOUR DONATION CAN DO

A donation of \$200,000 USD can establish this model in a range of communities within one country. It will prevent children falling through the cracks, teachers feeling overwhelmed or families deciding they can't afford to send their children to school. It will ensure that every child we reach has the support they need to survive, learn and be protected.

Each donation will have the potential to make a life-changing difference to children, families and communities, by:

- getting each child back into school, where they can safely work towards their future
- improving their overall health and welfare, with a sustainable support network
- taking the immediate economic pressure off vulnerable households
- building capacity in communities and helping them to advocate for much needed national resources and services.
- partnering with existing government or partner schemes to cost-effectively support as many children as possible.

This agile and cost-effective model is highly-adaptable to individuals, families and communities. It can flex to meet the changing needs and contexts for the years ahead of us.

Speed is of the essence. This crisis is affecting thousands of children. The immediate effect of the pandemic changes from region to region, month to month. Its legacy for this lost generation will be felt for whole lifetimes, unless we take action now.

To discuss how you can help, please contact:

Hannah Richards

SB2S Emerging Innovations Programme Manager
hannah.richards@savethechildren.org

Safe Back to School Task Team
sb2s@savethechildren.org

Thank you for your support



Save the Children